



Malaysian Safety Health and Environment (S.H.E): A Code of Practice for fleet safety

Prof. Dr. Ahmad Farhan Sadullah

Director General

Malaysian Institute of Road Safety
Research (MIROS)

TARGET

 **DRIVER**

 **VEHICLE**

 **ROAD**

Causes of accidents involving commercial vehicles

- From accident investigations
 - Overloading of goods
 - Poor goods placement and stacking
 - Driver error - fatigue
 - Driver error – speeding and reckless driving
 - Poor vehicle maintenance
 - Visibility
 - Structural integrity
 - Dangerous to others
 - Bad practices
 - Outsourcing – third party issues
 - Safety not first
 - Integrity issues

- It is a quality system issue.

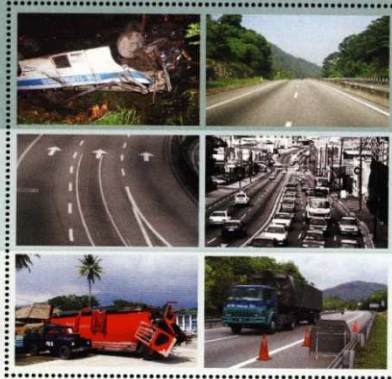
Why SHE Practice is Important?

- Accidents involving commercial vehicles remains to be significant
- 3rd party victims – passengers and/or drivers of other vehicles
- High-profile accidents involving multiple deaths
- Implemented to ensure safety thus reducing accidents
- SHE is best implemented on fleet operators

MCP 1/2007

KOD AMALAN

Keselamatan, Kesihatan dan Alam Sekitar



untuk sektor pengangkutan



Kementerian Pengangkutan



Kementerian Sumber Manusia



Kementerian Pelancongan Malaysia



Kementerian Pembangunan Usahawan dan Koperasi

SHE Code of Practice

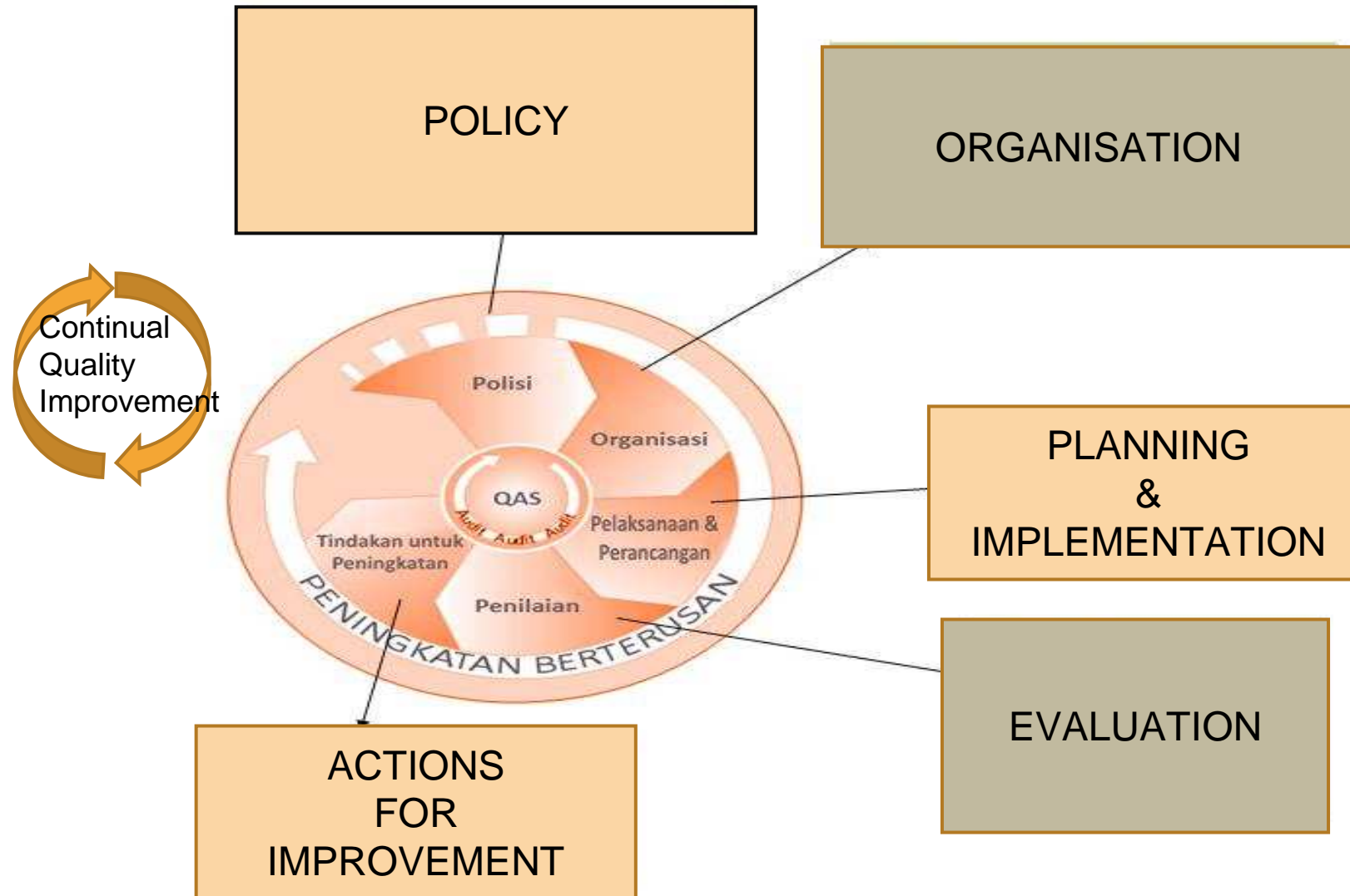
SHE CODE OF PRACTICE:

Objectives

- To prepare guidelines for employer and employees with regards to Occupational Safety (transportation) & Health aspects.
- To stimulate the education and awareness of health and safety at the workplace.
- To ensure public safety

SHE CODE OF PRACTICE:

Implementation concept

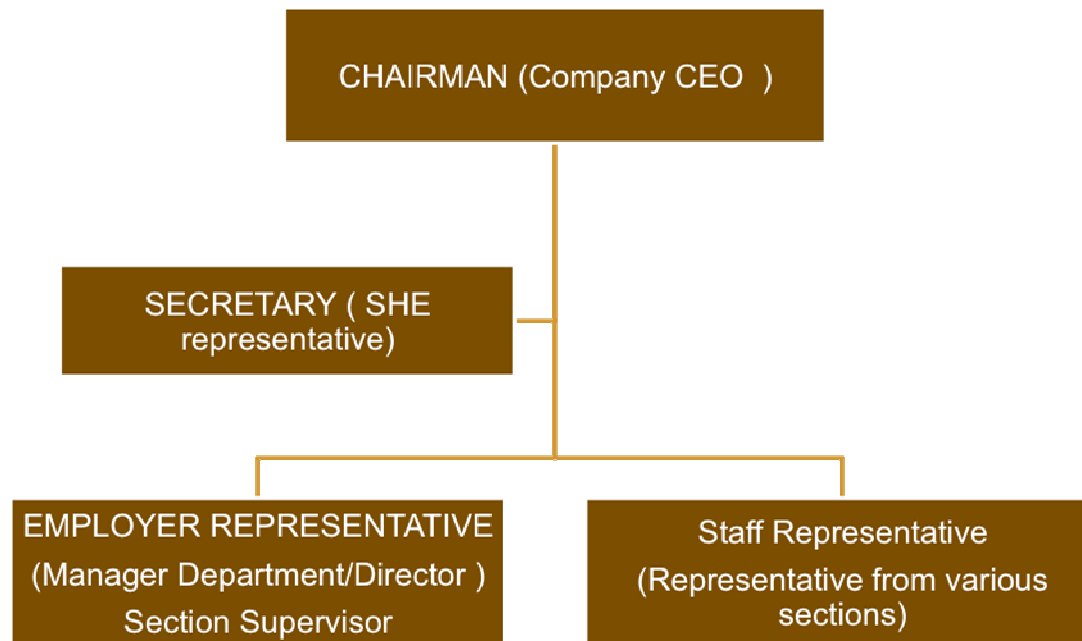


SHE CODE OF PRACTICE:

Implementation Concept- Policy

- Company policy
- Role of Chief Executive Officer(CEO)
- Responsibilities of employer
- Staff participation
- Communication between employee and employer

SHE CODE OF PRACTICE: *Implementation Concept- Organisation*



- Safety Health Committee
- Safety Health Officer
- Quality Assurance System (QAS)

SHE CODE OF PRACTICE:

Implementation Concept– Planning and Implementation

- Planning of SHE adaptation into the organisation
- Develop action plan based on the set standards
- Develop standard operating procedures based on the 4 main procedures
 - Driver management
 - Vehicle management
 - Travel and risk management
 - Data and report management

SHE CODE OF PRACTICE: ***SOP – Driver Management***

- Recruitment procedure
- Driver categorization
- Training and change in thinking
- Driving Procedure
- Driving duration and driver shift
- Recognition and Punishment

SHE CODE OF PRACTICE: ***SOP – Vehicle Management***

- Vehicle integrity
- Replacement and decommissioning
- Maintenance and Repair
- Vehicle assignments
- Use of Transport
- Vehicle licensing

SHE CODE OF PRACTICE: ***SOP – Travel and Risk Management***

- Identification of dangers and risk en-route
- Travel risk management
- Personal Accident coverage
- Insurance protection
- Load/passenger Management
- Emergency response
- Insurance coverage

SHE CODE OF PRACTICE: ***SOP – Data and Report Management***

- Incident/accident Reporting System
- Management of Complaints
- SHE Training and competency
- Management of Contractor
- Driver management record
- Vehicle management record
- Travel and risk management record
- Monitoring system
- Self assessment

SHE CODE OF PRACTICE:

Implementation concept- Evaluation

- Performance analysis and monitoring
- Internal Audit
- External Audit
- Grading and Licensing

SHE CODE OF PRACTICE:

Implementation concept – Action for improvement

- Prevention and Corrective
- Continual improvement

IMPLEMENTATION STRATEGY

- In the 1994 OSHA – has always been a requirement
- Cabinet directive with the publication of MCP 1/2007 – to help address the issue (2007)
- Official launch – 23rd September 2008
- Inquiries – forced implementation through accident inquiries
- Pilot cases – KTB – continuous mentoring and evaluation
- Expanding to other fleets (government agencies and institution of higher learning)
- Mentoring programme – Shell and MGRSP efforts
- Auditing exercise – Training of trainers and auditors

EFFORTS THROUGH MGRSP

- Shell as first partner – Hearts and Minds (23/9/08)
- Road Transport safety Mentoring programme

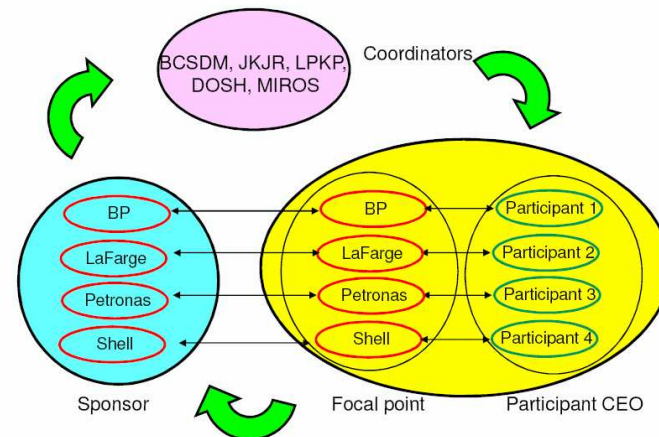
Road Transport Safety Mentoring Programme

Objectives

- To improve road safety performance in Malaysia in a sustainable manner
- To motivate transport sector in Malaysia that significant improvement is possible
- To raise the standard and practices of transport sector in Malaysia
- To provide opportunity for smaller company to learn from multinational on a structured basis
- To provide platform to multinational to live their CSR

Key Success Factors

- Commitment to Road Safety
- Time and resource commitment from Focal points, Participants
- Support from Sponsors



Source: Presentation at
Hearts and Minds workshop
23/9/08

EARLY SIGNS OF SUCCESS

- Accidents involving commercial vehicle in 2008
 - Buses – reduction by 50% on fatalities involving buses between Jan – August 2008 compared to the same period last year
 - Lorries – similar trend to last year – need to give more attention
- More buying in process
 - Official effort
 - Unofficial effort
- Towards making it a culture for fleet operators



Thank you

farhan@miros.gov.my